

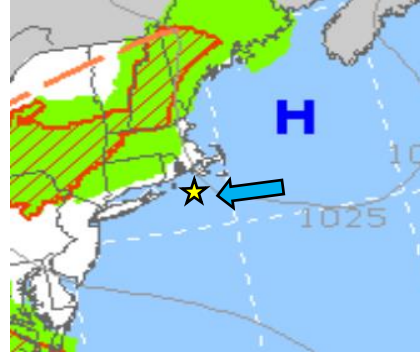
For exclusive use by: BLOCK ISLAND RACE WEEK COMPETITORS

Forecast Location: Block Island, RI

Forecast Date/Time: 0700 EDT Tues June 20 2023

Forecast by: Chelsea Freas

18utc / 1pm EST



Big Picture/ Gradient: Similar big picture today to yesterday. High to the east, and mainly ENE-SE gradient winds. At 1,000ft up, the gradient winds are from 090-100 up through 1pm, then 3-4pm backing to 080.

General Weather Sky: Mostly sunny, clouds increasing overnight tonight.
Waves: S-SSE, 2-3 ft
Air Temp: High 67
H2O Temp: low 60s
Tides: high 10:48 am
low 4:07 pm

- Details:**
- **Bottom Line: E gradient again today, similar to yesterday..**
 - From 8-11am we will be in the gradient wind regime, which is leftmost numbers of the day
 - winds this morning are 070-090/ around 10 kts
 - a little gusty up through the first start around 11.
 - 12pm-1pm will again be transition time when winds begin to veer/move right.
 - I think overall winds today may not go as far right as they did yesterday (a bit cooler on mainland)
 - Pressure then increasing into the later part of the afternoon as mixing occurs
 - possible for up to ~15 kt towards end of afternoon, esp at Blue circle.
 - Green and White circles more likely to have slightly lighter winds, that are generally more left
 - Blue circle will again see veered winds first, and overall stronger pressure into aftn – especially along the right side of their course
 - Likely we see our max right around 3pm
 - All courses may see a late afternoon lefty starting 3:30-4pm along with pressure increase, as the gradient begins to take over once again.

**Wind Forecast
WHITE /GRN CIRCLE**

Time (EST)	1000	1100	1200	1300	1400	1500	1600
Wind Direction (mag)	080-100	080-100	090-110	090-110	100-120	110-130	100-120
Wind Speed (knots)	8-13	9-14	7-12	8-12	9-14	9-14	9-14
Gust (knots)		15					15
Comments		gusty around first start	veering			max right?	late afternoon lefty with build

**Wind Forecast
BLUE CIRCLE**

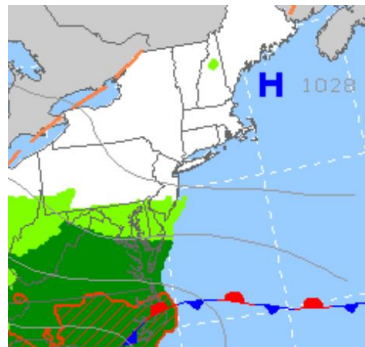
Time (EST)	1000	1100	1200	1300	1400	1500	1600
Wind Direction (mag)	080-100	080-100	100-110	120-140	120-140	120-140	100-130
Wind Speed (knots)	8-13	9-14	8-13	9-14	9-14	9-14	10-15
Gust (knots)		15					
Comments		gusty around first start	veering			max right?	late afternoon lefty with build

**Confidence/
Alternative scenarios**

- Confidence is average to a bit above.
- Similar story to yesterday, sunny skies will follow forecast above, and if skies turn cloudy for some reason then winds will stay further left towards gradient direction (090)
- Max right today is 140 – should see this around 3pm.
- Max left is 080 (will see this early in the day)

**Outlook
Wed June 21**

Pressure gradient increases with high pressure still to our east, and a new low pressure system developing to the south along the east coast.

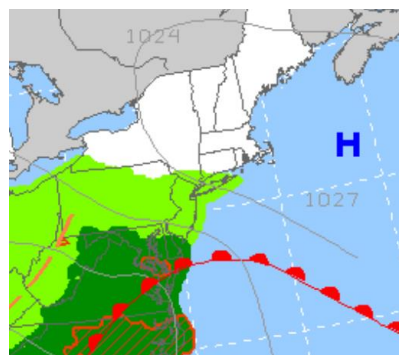


Time (EST)	1000	1200	1400	1600
Wind Direction (mag)	070-090	070-090	070-090	070-090
Wind Speed (knots)	11-16	12-17	15-20	15-20
Gust (knots)	18	18		

Weather **Sky** Low clouds in AM., turning Sunny
Temps High 67
Seas SE 3-5 ft

**Outlook
Thurs June 22**

It's now looking like the E-ENE winds will continue into Thursday - as the warm front to the south pushes northward. Still some uncertainty, as the models are still not sure how far north the front will be.

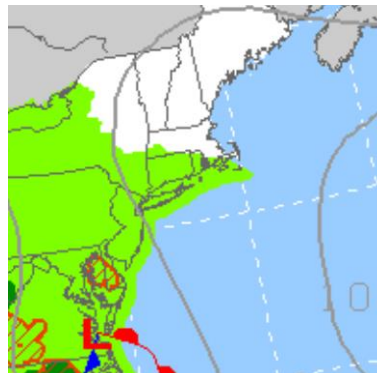


Time (EST)	1000	1200	1400	1600
Wind Direction (mag)	070-090	070-090	070-090	080-100
Wind Speed (knots)	10-16	10-16	12-17	12-17
Gust (knots)	18	18	18	19

Weather **Sky** Partly to mostly cloudy, slight risk for a shower.
Temps High 68
Seas S-SW 3-5 ft

**Outlook
Fri June 23**

Still lots of uncertainty for Friday (more than usual), with increasing chances for winds to stay out of the SE. Slight chance winds may turn more S, but overall pressure looks lighter than prev days.



Time (EST)	1000	1200	1400	1600
Wind Direction (mag)	110-130	120-140	130-160	140-160
Wind Speed (knots)	6-10	7-13	7-14	8-15
Gust (knots)				

Weather **Sky** Partly to mostly cloudy, chance for showers.
Temps High 70
Seas S-SW 3-5 ft